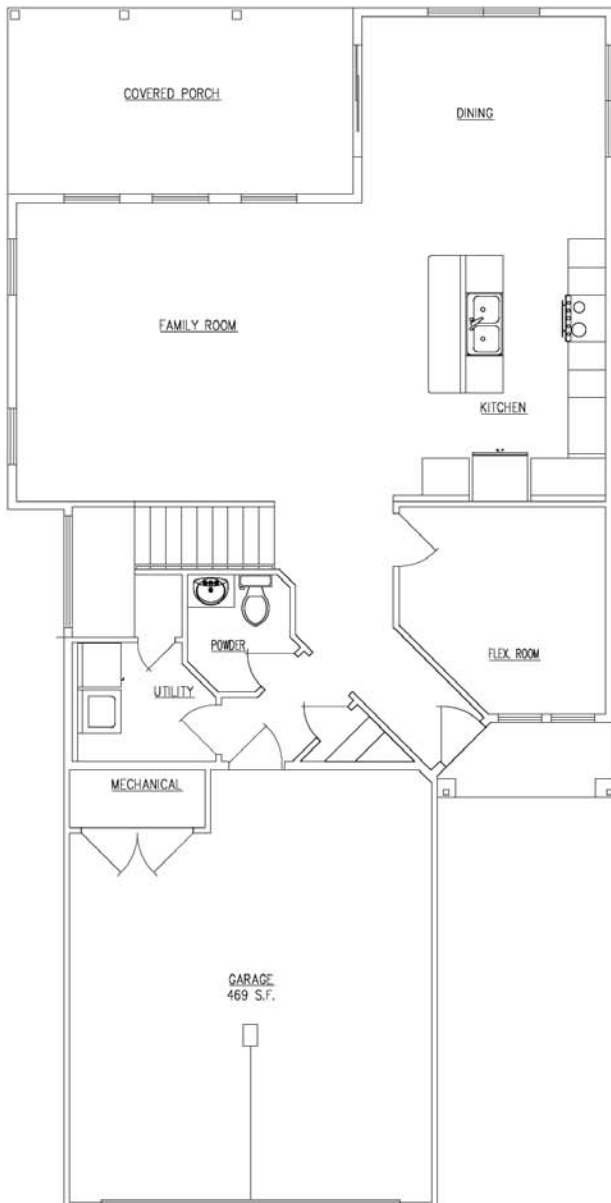




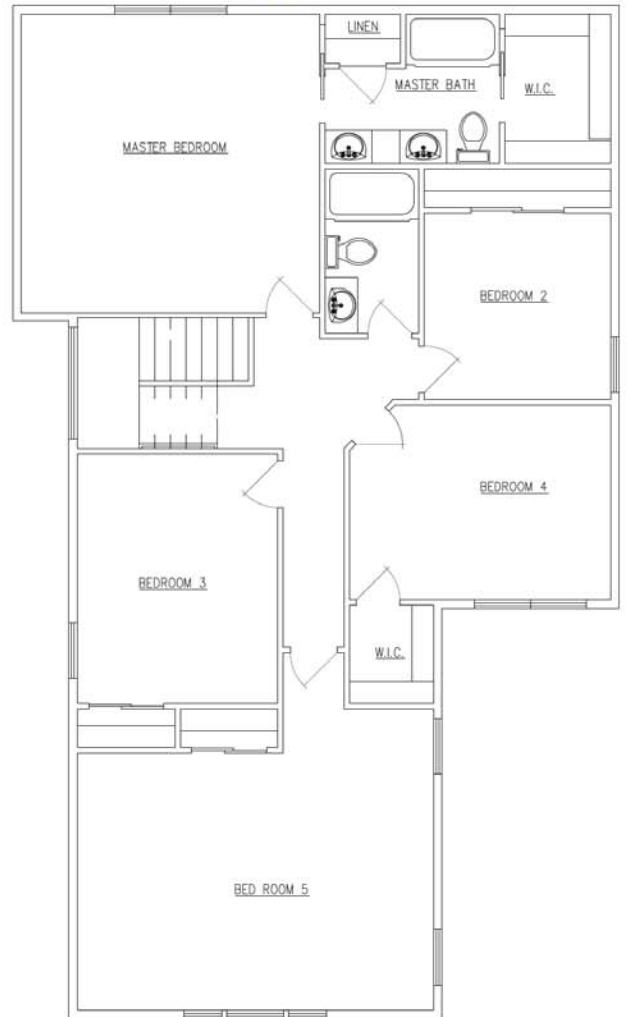
# ASHLAND PARK *east*

## **Schmohr**

3 or 4 Bedrooms / 2.5 Baths / 2 Car Garage  
Approximately 2,132 Square Feet



### Upper Level



Some lots are larger or more desirably located and require a higher price. Landscaping, fences, retaining walls, masonry wing-walls, stepping stones, railroad ties, decks, deck stairs, wallpaper, area rugs, draperies, interior shutters, floor receptacles, furnishings, washers, dryers and other personal property are used for display purposes only and are not included. Each display is shown with a variety of optional features that are extra cost items, and in their absence may alter to some degree, the overall appearance of the completed home. Purchasers are cautioned to investigate these items to their satisfaction and be sure that any optional features are clearly stated in any contract to purchase. For details on special optional features, promotions, standard features, etc., please consult your onsite salesperson. Prices, special offers and specifications are subject to change without notice. Dimensions are approximate: please consult salesperson.